

Cinnamon Shore Condos #3-204

140 Social Circle/Three Town Center



Awesome Town Center Location

Second floor 2-bedroom, 2-bath condo with elevator access and cool, covered balcony overlooking Town Center where you'll find Lisabella's fine dining, casual food & snack options, Terry's Place music stage, special events & community movies. Walk into this coastal condo and you'll find an open kitchen, dining, and living area with ship-lap ceiling, light wood-look tile flooring, gorgeous full-coverage backsplash, stainless appliances, and coastal built-ins, all extended to the outdoors by way of the sweet balcony seating area. Two bedroom suites, one with a king bed and one with twin beds, are as adorably appointed as the living area. And all the furnishings convey! In-unit laundry, too. Exterior storage closet on ground floor for beach toys. Just outside, you'll find easy access to the community market, eateries, multiple swimming pools, golf cart accessible dune crossover to the beach, and several park areas with family activities and games. Onsite rental management and many guest services for a worry-free investment &/or family vacation spot!

1,130 sq. ft. HOA dues: \$884/month—includes exterior building insurance.



Don't Miss the Boat! \$925,000

More
→

Selling Port A Everyday Since 1972



155 West Cotter Avenue, Port Aransas, Texas 78373

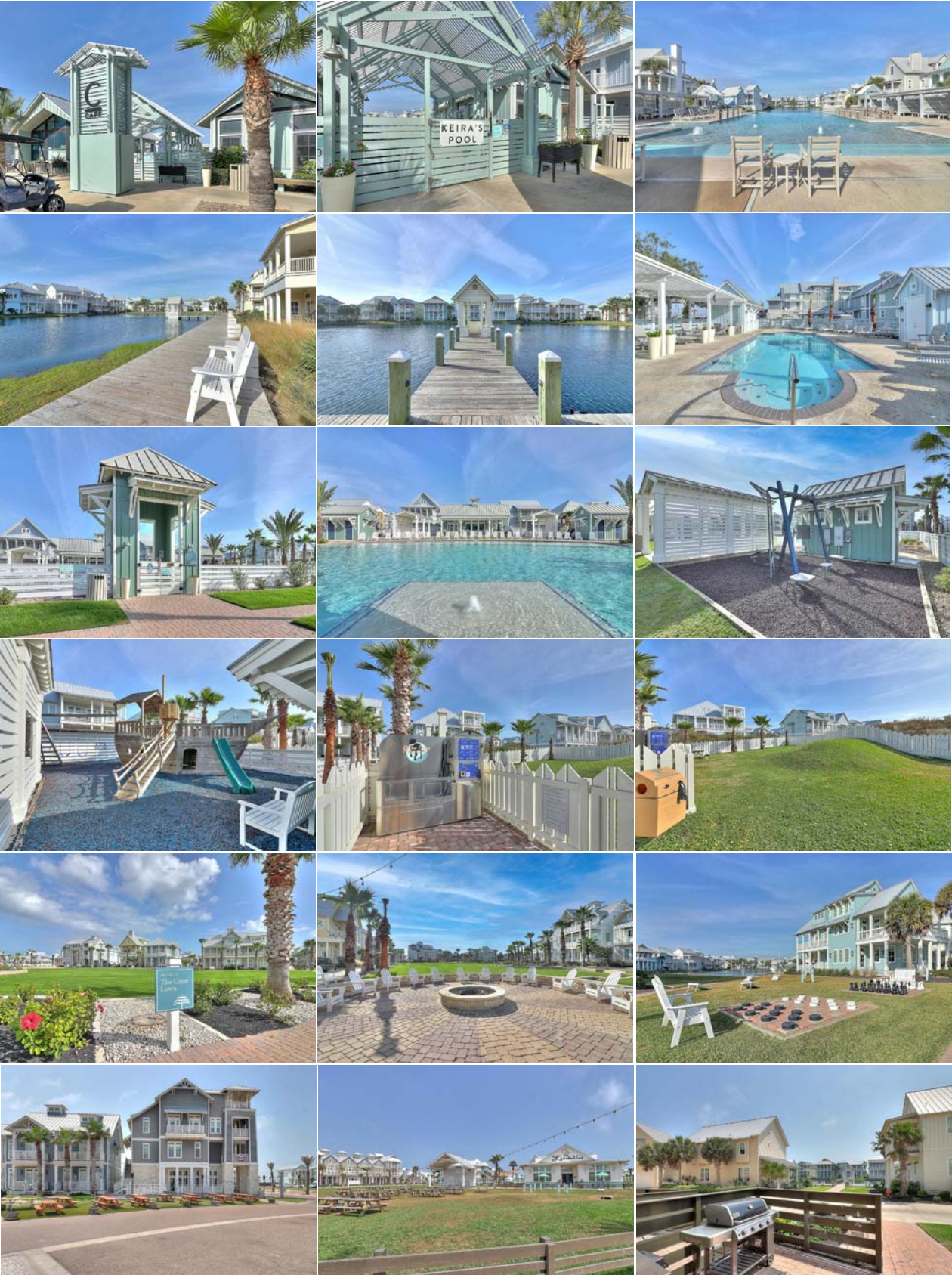
361-749-6603 • www.WeSellPortA.com

© 2022 Mark Grosse Real Estate Brokerage

This information is believed to be accurate at time of printing but cannot be guaranteed. Price, taxes, fees, square footage, uses & availability are subject to change.

Cinnamon Shore

Community Amenities



- Golf Cart Accessible Dune Crossover to Beach
- Groomed Beach w/ Chair & Umbrella Service Available
- Three Community Swimming Pools
- Community Lakes with Catch & Release Fishing
- Onsite Eateries from Pizza to Food Truck to Fine Dining
- Great Lawn with Fire Pit and Scheduled Activities
- Town Center with Live Music, Events and Movies
- Onsite Market for Essentials
- Multiple Play Areas with Fun for the Whole Family
- Puppy Park and Wash Station
- Onsite Golf Cart and Bicycle Rentals